

# 2020 Steel Resource Guide

*Pacific Northwest Steel Fabricators' Association*



[www.pnsfa.org](http://www.pnsfa.org)

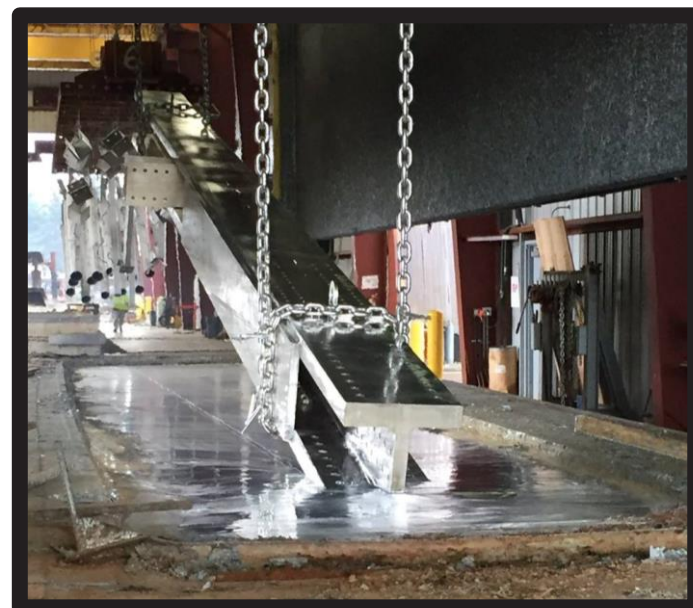
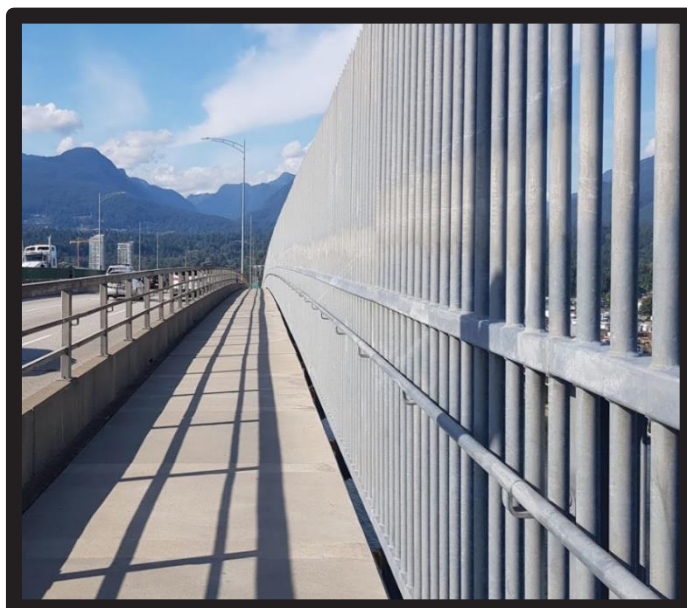




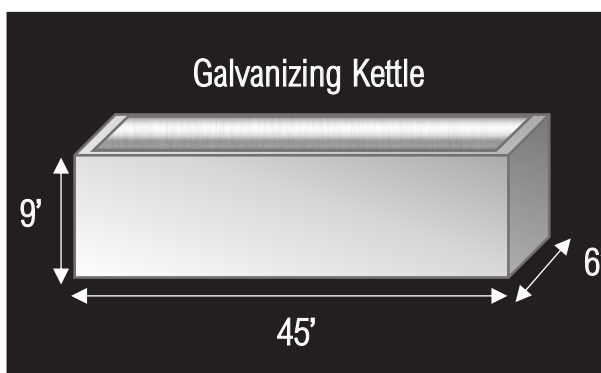
SEATTLE  
GALVANIZING  
COMPANY

**THE NORTHWEST'S LARGEST GALVANIZER**

We have the capacity to process over **50,000 tons** every year. Not only do we have the largest galvanizing kettle in the PNW, but we also have the material handling equipment, the lifting capabilities, the stabilized storage space, and the transportation services to make us your **best full-service galvanizing option**.



For over 50 years, Seattle Galvanizing has been providing corrosion protection for steel by Hot-Dip Galvanizing



Value - Added  
Services

- ☒ Expedited Service
- ☒ Sandblasting
- ☒ Trucking
- ☒ Masking
- ☒ Thread Chasing
- ☒ ASTM Certification
- ☒ Drain/Vent Hole Plugging

**Galvanizing Facility**

6010 199<sup>th</sup> Street NE  
Arlington, WA 98223

**Corporate Office**

19603 60<sup>th</sup> Avenue NE  
Arlington, WA 98223

Phone: (206)783-3100 Fax: (206)783-3101

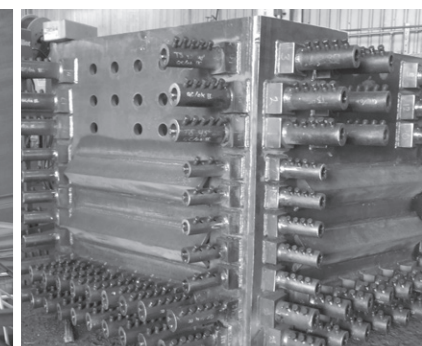
[www.seattlegalvanizing.com](http://www.seattlegalvanizing.com)



KO Custom Fab



The Lynch Company



Mohawk Metal



The Lynch Company

**PNSFA**

The steel industry in the Pacific Northwest is recognized as an established community of immense capacity and capability. Its scope encompasses the largest projects as well as the most technically exacting, tapping into a deep heritage of metal working experience and knowledge.

This Resource Guide is produced by the Pacific Northwest Steel Fabricators' Association (PNSFA) as a guide to steel fabricating and processing resources available in the Northwest Region. It is our hope that you will discover this to be an indispensable tool, providing knowledgeable and helpful contacts in all aspects of steel fabrication.

PNSFA encourages the development of the steel industry in the Pacific Northwest, strengthening its infrastructure through the exchange of knowledge and information among its members while also providing exposure to and training from specialists in related fields. Striving to keep steel professionals current and proficient as well as progressive in their approach to their industry is PNSFA's goal.

The PNSFA membership enjoys the company and benefit of producers of steel plate, structural members, pipe and tubing. We include steel distributors, processors, fabricators, providers of machining services, coatings, fasteners, equipment and others.

To learn more about PNSFA or for fabricator and associate membership information, please contact us.



**Pacific Northwest Steel Fabricators' Association**

147 SE 102nd Avenue • Portland, OR 97216

503.253.9030 • Fax 503.253.9172

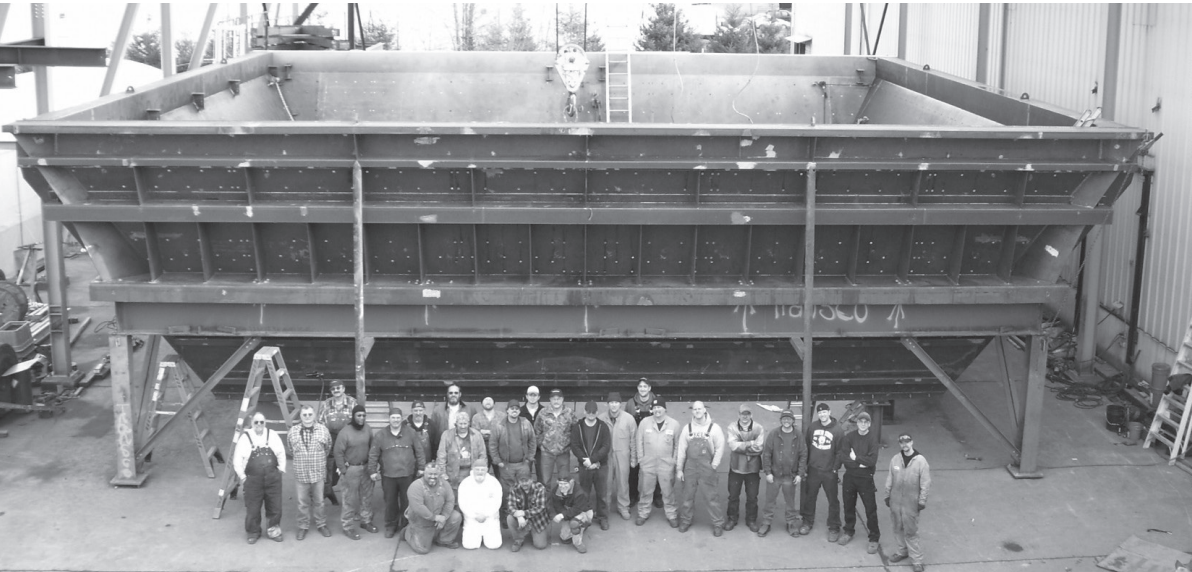
[info@pnsfa.org](mailto:info@pnsfa.org)

[www.pnsfa.org](http://www.pnsfa.org)



# Table of Contents

PNSFA Past Presidents Since 1989	3
Letter from the President	4
PNSFA Board of Directors	5
Professional and Technical Resources	6
Ten Reasons to Use Structural Steel	11
Fabricators Members by Company	12
Fabricators by State	16
PNSFA Membership Benefits	17
Associate Members by Company	18
AISC Certification	23
Advertiser Index	24
Photo Index	24
Fabricator Certifications and Association Memberships*	25
Areas of Specialty – Fabricator Members	26
Areas of Specialty – Associate Members	28



Transco

# PNSFA Past Presidents Since 1989

<b>1989 – Darrell W. Jesse</b> Jesse Engineering Co.	<b>2011 – Troy Ruff</b> Robertson Grating Products, Inc.	<b>2015 – Matt Smitth</b> L&M Industrial Fabrication
<b>1990 – Merv Wark</b> Yakima Steel Fabricators, Inc.	<b>2012 – Pat Prentice</b> The Lynch Company, Inc.	<b>2016 – Ken Oliver</b> KO Custom Fab, Inc.
<b>1991 – Steve Norquist</b> Western Steel Mfg. Co.	<b>2013 – Kevin Duthie</b> Standard Steel Fabricating Co., Inc.	<b>2017 – Thane Giles, P.E.</b> Vigor
<b>1992 – Terry Aarnio</b> Oregon Iron Works, Inc.	<b>2014 – Matt Smitth</b> L&M Industrial Fabrication	<b>2018 – Michael Moore</b> Thompson Metal Fab, Inc.
<b>1993 – Dave Williams</b> Universal Structural, Inc.		<b>2019 – Chad Fritz</b> L&M Industrial Fabrication
<b>1994 – Dave Williams</b> Universal Structural, Inc.		
<b>1995 – Ron Duquette</b> Ideal Steel, Inc.		
<b>1996 – Keith Mabin</b> Richardson Metal Works, Inc.		
<b>1997 – Jeff Gellert</b> Jesse Engineering Co.		
<b>1998 – David Marks</b> Marks Metal Technology		
<b>1999 – David Marks</b> Marks Metal Technology		
<b>2000 – Greg Duthie</b> Standard Steel Fabricating Co., Inc.		
<b>2001 – John Robertson</b> Robertson Grating Products, Inc.		
<b>2002 – Paul Davis</b> Redi-Fab, Inc.		
<b>2003 – Tom Hickman</b> Oregon Iron Works, Inc.		
<b>2004 – Jeff Hayes</b> Brooklyn Iron Works		
<b>2005 – Jeff Hayes</b> Brooklyn Iron Works		
<b>2006 – Drew Park</b> Columbia Wire & Iron Works, Inc.		
<b>2007 – Drew Park</b> Columbia Wire & Iron Works, Inc.		
<b>2008 – Jim Duthie</b> Standard Steel Fabricating Co., Inc.		
<b>2009 – Gust Erickson</b> Jesse Engineering Co.		
<b>2010 – Alan Halamay</b> Fought & Co., Inc.		

**The Lynch Company**

**Sheet Metal, Steel Fabrication and Installation Since 1919**

**Industries Served:**  
Agriculture/Irrigation  
Air Handling Systems  
Construction/Architecture  
Equipment Manufacturing  
Food Processing  
Forest Products  
Government/Military  
High Technology  
Industrial Castings  
Marine Repair & Mfg.  
Medical/Dental  
Plant Manufacturing  
Plant Repair  
Pulp & Paper Mills  
Sewage Control  
Pollution Control  
Site Furnishings  
Steel Mills  
Steel Service Centers  
Transportation  
Water Management

503-236-3825 • Fax: 503-238-4550  
4706 S.E. 18th Avenue • Portland, Oregon 97202  
www.thelynchco.com



## Letter from the President

### To our Partners and Colleagues in the Steel Industry,

We appreciate all of you who make a difference in the steel industry and our communities. It is the unique nature of our association and the national affiliations that allow us to work collaboratively to promote industry opportunities and engage with the future workforce.

Your investment in PNSFA matters - your annual membership, your time on committees and on the board, and how you connect your teams to PNSFA educational opportunities.

Please reach out if you or any of your non-member colleagues have any questions about membership, our events or being a part of leadership. And, be sure to connect with us on LinkedIn to get the latest on your local steel industry. (@pacific-northwest-steel-fabricators-association-pnsfa)=

#### ■ Chad Fritz

2019 and 2020 President of the Board

Pacific Northwest Steel Fabricators' Association

**Robertson  
Grating  
Products Inc.**

*"The Grate Company" Serving the USA in fabricating grating according to NAAMM Standards and our customer's requirements for 20 years.*  
**www.rgpgrates.com**



Grating fabricated to fit your job.

**RGP's Quality Products:** •Welded Bar Grating in Steel and Stainless Steel, Aluminum Swage-Lock Grating •Plank grating: Grip Strut, Perf-O Grip, Traction Tread, & Grate-Lock Plank Grating •Ladder Rungs •Molded Fiberglass Grating •Pultruded Fiberglass Grating •Fiberglass Structural Shapes •R & B Wagner Handrail Components •Kee Klamp Fittings •Hollaender Fittings •American Safety Tread •Polydrain Trench Systems •Perforated Metals •Wire Mesh •Expanded Metals

**Robertson Grating Products Inc. 18129 SW Boones Ferry Rd Bldg. 6, Portland, Oregon 97224**

**Mailing Address: Robertson Grating Products Inc. P.O. Box 4248, Tualatin, Oregon 97062**

**Phone: 503-597-4190 Fax: 503-597-4195 website: www.rgpgrates.com E-mail: sales@rgpgrates.com**

# PNSFA Board of Directors

## President

**CHAD FRITZ**

**L&M Industrial Fabrication**

31975 Rolland Dr.

Tangent, OR 97389

**Phone:** 541.752.0110

**Email:** fritzcc@lmsteelfab.com

## Director

**TY HEBERT**

**Mohawk Metal**

30011 Leghorn Ln.

Eugene, OR 97402

**Phone:** 971.313.1753

**Email:** thebert@mohawkmetal.com

## Associate Director

**CHRIS EVANS**

**Nucor Beam Group**

5125 Andes St., 4-103

Denver, CO 80249

**Phone:** 843.870.0311

**Email:** christopher.evans@nucor.com

## President-Elect

**STEVE TONG**

**Transco Industries Inc.**

5534 NE 122nd Ave.

Portland, OR 97294

**Phone:** 503.256.1955

**Email:** stong@transco-ind.com

## Director

**DAMION STRAIN**

**SunSteel LLC**

Vancouver Washington

**Phone:** damionstrain@gmail.com

**Email:** dstrain@sunsteelc.com

## Associate Director

**KELLY TOTTEN**

**Seaport Steel**

Seattle, WA

**Phone:** kellyt@seaportsteel.com

**Email:** www.seaportsteel.com

## Secretary/Treasurer

**PAT PRENTICE**

**The Lynch Company, Inc.**

4706 SE 18th Ave.

Portland, OR 97202-4789

**Phone:** 503.781.4062

**Email:** pat@thelynchco.com

## Director

**BRITTANY VAGO**

**KO Custom Fab**

Estacada, OR

**Phone:** 503.630.7990

**Email:** brittany@kocustomfab.com

## Immediate Past President

**MICHAEL MOORE**

**Thompson Metal Fab, Inc.**

3000 SE Hidden Way

Vancouver, WA 98661

**Phone:** 360.696.0811

**Email:** mmoore@tmfab.com

## Director

**JIM DUTHIE**

**Standard Steel Fabricating Co.**

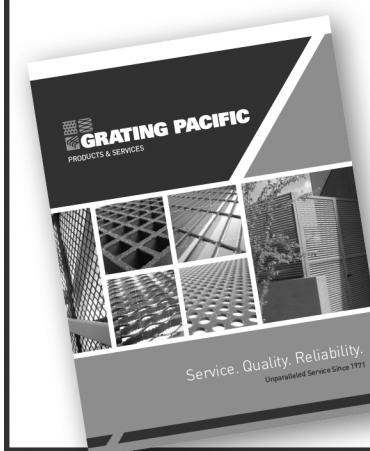
PO Box 80907

Seattle, WA 98108

**Phone:** 206.767.3314

**Email:** jduthie@standardsteelfab.com

## Your Superior Choice for Industrial Flooring, Fencing and Specialty Products.



- Metal Bar Grating
- Fiberglass Grating
- Safety Grating
- Algrip Safety Flooring
- Trench Drain
- Woven & Welded Wire Mesh
- Architectural Fencing & Grates
- Infill Panels
- Perforated & Expanded Designer Metal Products

Call Your Local Service Center for a

**FREE CATALOG!**

**www.gratingpacific.com**

**Arizona** - Phoenix, AZ  
1-888-936-9201

**C. California** - Madera, CA  
1-559-664-0709

**Oregon** - Woodburn, OR  
1-800-942-4041

**S. California** - Los Alamitos, CA  
1-800-321-4314

**N. California** - Tracy, CA  
1-800-491-7999

**Washington** - Kent, WA  
1-800-243-3939

**GRATING PACIFIC**  
Service. Quality. Reliability.

# Professional and Technical Resources

## **The Aluminum Association, Inc.**

1400 Crystal Dr., #430  
Arlington, VA 22202  
703.358.2960  
www.aluminum.org

## **American Association of State Highway and Transportation Officials (AASHTO)**

5555 12th Street NW, Suite 1000  
Washington, DC 20004  
202-624-5800  
www.transportation.org

## **American Bureau of Shipping (ABS)**

1707 City Plaza Drive  
Sprint, TX 77389  
281-877-6000  
www.eagle.org

## **American Concrete Institute**

38800 Country Club Dr.  
Farmington Hills, MI 48331-3439  
248.848.3700  
www.concrete.org

## **American Galvanizers Association**

6881 South Holly Circle, #108  
Centennial, CO 80112  
720.554.0900  
www.galvanizeit.org

## **American Institute of Architects**

1735 New York Ave., NW  
Washington, DC 20006-5292  
202.626.7300  
800.A1A.3837  
www.aia.org

## **American Institute of Mining, Metallurgical and Petroleum Engineers**

12999 East Adam Aircraft Circle  
Englewood, CO 80112  
303.325.5185  
www.aimehq.org

## **American Institute of Steel Construction**

130 E. Randolph, Suite 2000  
Chicago, IL 60601  
312.670.2400  
www.aisc.org

## **American Iron and Steel Institute**

25 Massachusetts Ave., NW, Suite 800  
Washington, DC 20001  
202.452.7100  
www.steel.org

## **American National Standards Institute**

1899 L. St. NW, 11th Floor  
Washington, DC 20036  
202.293.8020  
www.ansi.org

## **American Nuclear Society**

555 North Kensington Ave.  
La Grange Park, IL 60526  
800.323.3044  
www.ans.org

## **American Petroleum Institute**

A200 Massachusetts Avenue NW,  
Suite 1100  
Washington, DC 20001-5571  
www.api.org

## **American Society for Metals International**

9639 Kinsman Rd.  
Materials Park, OH 44073-0002  
440.338.5151  
www.asminternational.org

## **American Society for NonDestructive Testing**

1711 Arlingate Ln.  
PO Box 28518  
Columbus, OH 43228-0518  
800.222.2768  
www.asnt.org

## **American Society for Quality**

600 North Plankinton Ave.  
Milwaukee, WI 53203  
800.248.1946  
www.asq.org

## **American Society for Testing and Materials**

100 Barr Harbor Dr.  
PO Box C700  
West Conshohocken, PA 19428-2959  
877.909.2786  
www.astm.org

## **American Society of Civil Engineers**

1801 Alexander Bell Drive  
Reston, VA 20191-4400  
800.548.ASCE  
www.asce.org

## **American Society of Mechanical Engineers**

Two Park Ave.  
New York, NY 10016-5990  
800.843.2763  
www.asme.org

## **American Society of Safety Engineers**

520 N. Northwest Hwy.  
Park Ridge, IL 60068  
847.699.2929  
www.asse.org

## **American Testing Laboratory**

11 Industrial Rd.  
Pequannock, NJ 07440  
800.488.4951  
www.mytestlab.com

## **American Water Works Association**

6666 West Quincy Ave.  
Denver, CO 80235  
800.926.7337  
www.awwa.org

## **American Welding Society**

8669 NW 36 Street, #130  
Miami, FL 33166-6672  
800.443.9353 Ext. 449  
www.aws.org

## **Arc Welding Foundation**

Lincoln Electric Company of Canada  
Limited  
179 Wicksteed Avenue  
Toronto, ON M4G 2B9  
Canada  
416.421.2600  
www.jflf.org

## **Architectural Engineering Institute**

1801 Alexander Bell Drive  
Reston, VA 20191-4400  
703.295.6300  
800.548.2723  
www.asce.org/AEI/

## **Associated General Contractors of America (AGC)**

2300 Wilson Blvd., #300  
Arlington, VA 22201  
703.548.3118  
www.agc.org

## **Associated General Contractors (AGC) of Idaho**

1649 West Shoreline Dr.  
Suite 100  
Boise, ID 83702  
208.344.2531  
www.idahoagc.org

## **Associated General Contractors (AGC) of Oregon - Columbia Chapter**

9450 SW Commerce Circle, #200  
Wilsonville, OR 97070  
503.682.3363  
www.agc-oregon.org

## **Associated General Contractors (AGC) of Washington**

1200 Westlake Ave., N. #301  
Seattle, WA 98109-3528  
206.284.0061  
www.agcwa.com

## **Association of American Railroads**

425 Third St., SW  
Washington, DC 20024  
202.639.2100  
www.aar.org

## **Association for Iron & Steel Technology**

186 Thorn Hill Rd.  
Warrendale, PA 15086-7528  
724.814.3000  
www.aist.org

## **British Constructional Steelwork Association**

4 Whitehall Court  
Westminster, London, SW1A 2ES  
England  
+44 (0) 20.7839.8566  
www.bcsa.org.uk

## **Bureau of Labor Statistics**

Postal Square Building  
2 Massachusetts Ave. NE  
Washington, DC 20212-0001  
800.877.8339  
www.bls.gov

## **Canadian Institute of Steel Construction**

445 Apple Creek Blvd, Suite 102  
Markham, ON Canada L3R 9X7  
905.604.3231  
www.cisc-icca.ca

## **Canadian Sheet Steel Building Institute**

652 Bishop St. N., Unit 2A  
Cambridge, ON N3H 4V6  
Canada  
519.650.1285  
www.cssbi.ca

## **Construction Specifications Institute**

123 North Pitt Street, Suite 450  
Alexandria, VA 22314  
800.689.2900  
www.csinet.org

## **Environmental Protection Agency - Region 10**

1200 6th Ave.  
Seattle, WA 98101, Ste. 155  
800.424.4372  
www.epa.gov

## **European Convention for Constructional Steelwork**

32, av. des Ombrages, bte 20  
1200 Brussels  
Belgium  
+32.2/762.04.29  
www.steelconstruct.com

## **Federal Highway Administration**

1200 New Jersey Ave., SE  
Washington, DC 20590  
202.366.4000  
www.fhwa.dot.gov

## **Federal Transit Administration**

1200 New Jersey Ave. SE  
Washington, DC 20590  
202.366.4043  
www.fta.dot.gov

## **Idaho Department of Transportation**

3311 W. State Street  
Boise, ID 83707-1129  
208.334.8000  
www.itd.idaho.gov

## **Industrial Fasteners Institute**

6363 Oak Tree Boulevard  
Independence, OH 44131  
216.241.1482  
www.indfast.org

## **The Institute of Materials, Minerals and Mining**

297 Euston Road  
London NW1 3AD  
UK  
44(0)20 7451 7300  
www.iom3.org

## **International Code Council**

500 New Jersey Ave. NW, 6th Floor  
Washington, DC 20001  
888.ICC.SAFE (422.7233)  
www.iccsafe.org



## Professional & Technical Resources

### Iron & Steel Society

A Division of the Institute of Materials,  
Minerals and Mining  
[www.iom3.org/iron-steel-society](http://www.iom3.org/iron-steel-society)

### James F. Lincoln Arc Welding Foundation - USA

The Lincoln Electric Company  
22801 St. Clair Ave.  
Cleveland, OH 44117  
216.481.8100  
[www.jlff.org](http://www.jlff.org)

### Material Handling Institute

8720 Red Oak Blvd., Suite 201  
Charlotte, NC 28217-3992  
704.676.1190  
[www.mhi.org](http://www.mhi.org)

### Materials Properties Council, Inc.

PO Box 201547  
Shaker Heights, OH 44211  
206.658.3847  
[www.forengineers.org/materials-properties-council](http://www.forengineers.org/materials-properties-council)

### Metal Building Manufacturers Association

1300 Sumner Ave.  
Cleveland, OH 44115-2851  
216.241.7333  
[www.mbma.com](http://www.mbma.com)

### Metals Service Center Institute

4201 Euclid Ave.  
Rolling Meadows, IL 60008  
847.485.3000  
[www.mscl.org](http://www.mscl.org)

### National Academy of Sciences

500 Fifth St. NW  
Washington, DC 20001  
202.334.2000  
[www.nasonline.org](http://www.nasonline.org)

### National Association of Corrosion Engineers

15835 Park Ten Pl.  
Houston, TX 77084  
800.797.6223  
[www.nace.org](http://www.nace.org)

### National Corrugated Steel Pipe Association

14070 Proton Rd. #100 LB9  
Dallas, TX 75244  
972.850.1907  
[www.ncspa.org](http://www.ncspa.org)

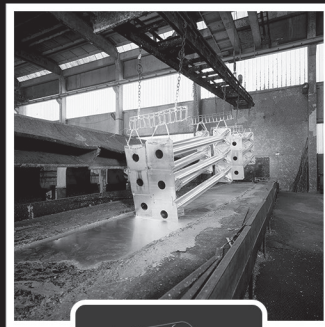
### National Council of Structural Engineers Associations

20 N. Wacker Drive, Suite 750  
Chicago, IL 60606  
312.649.4600  
[www.ncsea.com](http://www.ncsea.com)

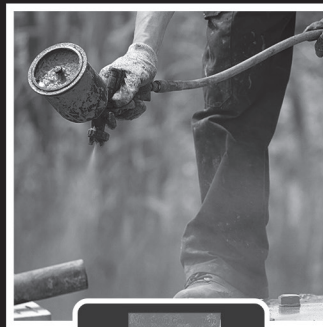
**InfoSight**  
Corporation  
*"We BARCODE Difficult Stuff"*

[www.infosight.com](http://www.infosight.com)  
+1-740-642-3600  
[sales@infosight.com](mailto:sales@infosight.com)

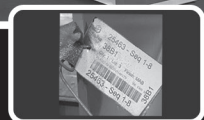
## Identification and Traceability Solutions for Galvanizers and Fabricators



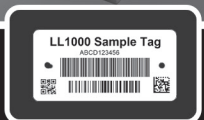
KettleTag®PLUS



PaintTag™



ShotTag™



LL1000 Printer

## Professional & Technical Resources

### National Fire Protection Association

1 Batterymarch Park  
Quincy, MA 02169  
800.344.3555  
[www.nfpa.org](http://www.nfpa.org)

### National Fire Sprinkler Association

514 Progress Drive, Suite A  
Linthicum Heights, MD 21090  
800.683.NFSA (6372)  
[www.nfsa.org](http://www.nfsa.org)

### National Institute of Building Sciences

1090 Vermont Ave. NW, Suite 700  
Washington, DC 20005  
202.289.7800  
[www.nibs.org](http://www.nibs.org)

### National Institute of Standards and Technology (NIST)

100 Bureau Drive, Stop 1070  
Gaithersburg, MD 20899-1070  
301.975.2000  
[www.nist.gov](http://www.nist.gov)

### National Institute of Steel Detailing

2600 Kitty Hawk Rd., Suite 117  
Livermore, CA 94551  
925.294.9626  
[www.nisd.org](http://www.nisd.org)

### National Safety Council

1121 Spring Lake Dr.  
Itasca, IL 60143-3201  
630.285.1121  
[www.nsc.org](http://www.nsc.org)

### The National Science Foundation

2415 Eisenhower Avenue  
Alexandria, VA 22314  
703.292.5111  
[www.nsf.gov](http://www.nsf.gov)

### National Technical Information Service

Technology Administration  
U.S. Department of Commerce  
5301 Shawnee Road  
Alexandria, VA 22312  
800.553.6847  
[www.ntis.org](http://www.ntis.org)

### Occupational Safety & Health - Oregon

350 Winter St. NE, 3rd Floor  
Salem, OR 97309-0405  
503.378.3272  
[www.osha.oregon.gov](http://www.osha.oregon.gov)

### Oregon Department of Transportation (ODOT)

355 Capitol St., NE, MS 11  
Salem, OR 97301-3871  
888.275.6368  
[www.oregon.gov/odot/](http://www.oregon.gov/odot/)

### Post-Tensioning Institute

38800 Country Club Drive  
Farmington Hills, MI 48331  
248.848.3180  
[www.post-tensioning.org](http://www.post-tensioning.org)

### Precast/Prestressed Concrete Institute

200 W Adams St., #2100  
Chicago, IL 60606  
312.786.0300  
[www.pci.org](http://www.pci.org)

**JESSE CO.**  
METAL FABRICATION AND MACHINERY

AISC CERTIFIED FABRICATOR — ADVANCED BRIDGE (FC)

**FABRICATION MACHINERY EQUIPMENT**

(253) 922-7433 / 1840 MARINE VIEW DRIVE, TACOMA WA 98422 / [JESSE-CO.COM](http://JESSE-CO.COM)



## Robotics Industries Association

900 Victors Way, #140  
Ann Arbor, MI 48108  
734.994.6088  
www.robotics.org

## Society for Protective Coatings

800 Tumbull Drive  
Pittsburgh, PA 15205  
877.281.7772  
www.sspc.org

## Steel Deck Institute

P.O. Box 426  
Glenshaw, PA 15116  
412.487.3325  
www.sdi.org

## Steel Joist Institute

140 West Evans Street, Suite 203  
Florence, SC 29501  
843.407.4091  
www.steeljoist.org

## Steel Tank Institute/Steel Plate Fabricators Association

944 Donata Ct.  
Lake Zurich, IL 60047  
847.438.8265  
www.steeltank.com

## Steel Tube Institute of North America

2516 Waukegan Rd., #172  
Glenview, IL 60025  
847.461.1701  
www.steeltubeinstitute.org

## Underwriters Laboratories, Inc.

14301 SE 1st Street, Suite 140  
Vancouver, W 96684  
877.854.3577  
www.ul.com

## United Engineering Foundation

c/o Glendmede  
1650 Market Street, Suite 1200  
Philadelphia, PA 19103  
973.244.2328  
www.uefoundation.org

## US Army Corps of Engineers

441 G. St. NW  
Washington, DC 20314-1000  
202.761.0001  
hq-publicaffairs@usace.army.mil  
www.usace.army.mil

## US Department of Housing and Urban Development

451 7th Street SW  
Washington, DC 20410  
202.708.1112  
www.hud.gov

## US Department of Labor - Occupational Safety & Health Administration

200 Constitution Avenue, NW  
Washington, DC 20210  
800.321.OSHA  
www.osha.gov

## Washington Department of Labor and Industries

7273 Linderson Way SW  
Tumwater, WA 98501-5414  
360.902.5800  
www.lni.wa.gov

## Washington State Department of Transportation (WSDOT)

PO Box 47300  
310 Maple Park Ave., SE  
Olympia, WA 98504-7300  
360.705.7000  
www.wsdot.wa.gov


## Welding Research Council

PO Box 201547  
Shaker Heights, OH 44211  
206.658.3847  
www.forengineers.org



Transco

### SIGN STRUCTURES MISC. BRIDGE STEEL MARINE WORK




**AISC SIMPLE BRIDGE CERTIFIED**

STRUCTURAL, MISC. IRON, PLATE WORK & TRUSSES  
FOR HIGHWAY, MARINE & UTILITY PROJECTS.

### HOGAN FAB, INC.

5722 S.E. Johnson Creek Blvd.  
Portland, OR 97206  
PHONE: (503) 774-4940  
FAX: (503) 775-3643  
e-mail address: sales@hoganfab.com



# Ten Reasons to Use Structural Steel

### 1. Cost-effective

Compared to other framing materials, structural steel brings greater value to a project in terms of initial cost and can reduce costs in other areas, such as foundations, general conditions and facade systems.

### 2. Accelerated schedules

The structural framing system is always on the project's critical path regardless of material. Structural steel is fabricated off-site while preliminary site preparation and foundation work are being performed. Then it is brought to the site and rapidly erected, accelerating the overall project schedule.

### 3. Increased usable floor space

Structural steel is both light and strong, allowing for long spans and open, column-free spaces.

### 4. Aesthetically pleasing

Structural steel frames provide designers with a wide range of options for addressing a project's aesthetic requirements. Structural steel can be rolled, curved, and integrated into irregular building shapes. At the same time, its small footprint contributes to a sense of transparency for the building.

### 5. Future adaptability

An existing steel frame can be easily modified to address changing building requirements and uses.

### 6. Quality and predictability

Structural steel is fabricated off-site under controlled conditions, ensuring a high-quality product and reducing the number of costly fixes at the job site - allowing for just-in-time delivery and , acceleration of the overall project schedule.

### 7. Ease of design

Structural steel is produced to precise tolerances and consistent strength levels, which, when combined with an established, well-documented design approach, can greatly simplify the design process.

### 8. Enhanced productivity

Advanced technologies have been proven to reduce or eliminate errors, improve safety, and lower project costs. Structural steel leads the construction industry with a fully integrated supply chain that uses computer-aided manufacturing and building information modeling (BIM) at all stages of design and construction.

### 9. Green

Today's modern steel mills produce steel containing an average of 90% recycled material. At the end of a building's life cycle, 100% of the steel frame can be recycled (the current recovery rate for structural steel is 98%). With low environmental impacts on a per-square-foot-of-construction basis, steel is the premier choice for environmentally conscious, sustainable projects.

### 10. There's always a solution in steel

No matter what specific project challenges arise, structural steel framing systems can meet them!

It is critical that during periods of volatility, structural engineers, architects, construction managers, general contractors, and project owners step back and make wise decisions regarding material and product choices based on a full range of considerations.

Source: American Institute of Structural Steel



**PACIFIC STATES GALVANIZING**

9700 SW Herman Road  
Tualatin, OR 97062  
Phone: (503) 692-8888  
Fax: (503) 612-0592  
pacificstatesinfo@valmont.com

## Valmont-Pacific States Galvanizing Hot Dip Galvanizing Services

### Protecting steel since 1981

Conveniently located in the "Coaters-Loop," Valmont- Pacific States Galvanizing has been protecting steel since 1981. With 15,000 combined years of experience, we have the technical expertise to produce high quality corrosion protection, on time and at a competitive price.

**Learn more at: [www.valmontcoatings.com](http://www.valmontcoatings.com)**

**Galvanizing Kettle**  
44' Long x 5'3" Wide x 8'9" Deep



# Fabricator Members by Company

## Advanced Welding And Steel

257 Hwy 95 N  
Grangeville, ID 83530  
**Phone:** 208-996-8114  
**Email:** adamf@awssteel.com  
**Website:** www.awssteel.com  
**Year Established:** 1998  
**Description:** Structural Steel Fabricator  
**Contact(s):** Adam Forsmann, Daniel Harris, Neil Bruegeman

## Albina Co., Inc.

12080 SW Myslony St.  
Tualatin, OR 97062  
**Phone:** 503.692.6010  
**Email:** bsmith@albinaco.com  
**Website:** www.albinaco.com  
**Year Established:** 1939  
**Description:** Albina provides a wide array of bending and fabrication services of structural members, HSS tube, pipe and plate for a variety of industries.  
**Contact(s):** Aaron Hughes, Brian Smith, Jaime Smith, Jason Orefice, KC Lesch, Mark King, Brad Lund,

## Brooklyn Iron Works

2401 E Brooklyn Ave.  
Spokane, WA 99217  
**Phone:** 509.468.2310  
**Email:** rirving@biwinc.us  
**Website:** www.biwinc.us  
**Year Established:** 1982  
**Description:** Brooklyn Iron Works is a fabricator of structural and miscellaneous steel with the ability to provide multiple coat paint jobs, complex fabrication and fast track projects. CWB Membership.  
**Contact(s):** Rich Irving

## Carbon Steel, Inc.

5 NW 5th, #200  
Portland, OR 97209  
**Phone:** 503.878.7727  
**Email:** brittany.vago@carbonsteelinc.com  
**Website:** www.carbonsteelinc.com  
**Year Established:** 2019  
**Description:** Structural Steel Fabricator & Management Company  
**Contact(s):** Brittany Vago, Chris Trueblood, Corey Sliva

## Grating Pacific, LLC

2775 N Front St.  
Woodburn, OR 97071  
**Phone:** 503.980.2060  
**Email:** tbachman@gratingpacific.com  
**Website:** www.gratingpacific.com  
**Year Established:** 1971  
**Description:** Grating Pacific is the premier source for metal grating, fiberglass grating, safety grating, woven and welded wire mesh, architectural fencing, gates, infill panels, and designer metal products.  
**Contact(s):** Shawn Foster, Michael Nuttbrock, Pat Frederickson

## Greenberry Industrial LLC

600 SE Maritime Ave, Ste 190  
Vancouver, WA 98661  
**Phone:** 360-567-0006  
**Email:** megan.murphy@greenberry.com  
**Website:** www.greenberry.com  
**Year Established:** 1974  
**Description:** Greenberry is an industrial contractor and fabricator with over 45 years of experience working on highly specialized, multi-faceted industrial projects throughout North America. We self-perform civil, mechanical, and structural work as a prime contractor on major capital and maintenance projects, as well as fabricating complex vessels, pipe spools, tanks, structural steel, and modules. Greenberry holds ASME U & S stamps; National Board R stamp; NQA-1 certification; AISC Advanced Bridge certification, Hydraulic Steel Structures, and Fracture Critical endorsement; and ISO 9001:2015 certification.  
**Contact(s):** Brian Bennett, Brent Delahunt, Meghan Murphy, Chase Oyler

## Hogan Fab., Inc.

5722 SE Johnson Creek Blvd.  
Portland, OR 97206  
**Phone:** 503.774.4940  
**Email:** accounting@hoganfab.com  
**Website:** www.hoganfab.com  
**Year Established:** 1993  
**Description:** A job shop primarily known for supplying sign structures, ornamental fencing and miscellaneous iron on highway projects but also serve many industrial, utility and marine contractors.  
**Contact(s):** Brian Hogan, Harold Taylor, Rachel Vlaew

## Ideal Steel, Inc.

90693 Link Rd.  
Eugene, OR 97402  
**Phone:** 541-689-0901  
**Email:** pauld@idealsteelinc.com  
**Website:** www.idealsteelinc.com  
**Year Established:** 1987  
**Description:** We custom cut carbon steel plate with multi-torch CNC flame cutting equipment. Other processes available include shearing-forming flattening, straightening, beveling, milling, drilling, shotblasting and powder coating. Our other locations are in Springfield, OH, Seneca, SC, and Houston, TX.  
**Contact(s):** Ron Duquette, Bob McAllister

## Jesse Co.

1840 Marine View Dr.  
Tacoma, WA 98422  
**Phone:** 253.9227433  
**Email:** gerickson@jesse-co.com  
**Website:** www.jesse-co.com  
**Year Established:** 1976  
**Description:** Jesse Co. is one of the Northwest's largest fabricators. Our specialty is making complex projects simple, delivering on budget, and on time.  
**Contact(s):** Gust Erickson, Phillip Jesse

## KO Custom Fab, Inc.

PO Box 1343  
Estacada, OR 97023  
**Phone:** 503.630.7990  
**Email:** ken@kocustomfab.com  
**Website:** www.kocustomfab.com  
**Year Established:** 1999  
**Description:** KO Custom Fab provides structural steel and miscellaneous iron, stairs and handrails for both the commercial & residential construction industries, along with architectural iron for the equestrian industry.  
**Contact(s):** Ken Oliver

## L&M, a Division of SteelFab, Inc.

31975 Rolland Dr.  
Tangent, OR 97389  
**Phone:** 541.752.0110  
**Email:** fritzc@lmsteelfab.com  
**Website:** www.lmsteelfab.com  
**Year Established:** 1970  
**Description:** L & M, a Division of SteelFab, Inc. is an AISC Certified fabricator of structural and industrial steel and specialty metals projects throughout the Western United States.  
**Contact(s):** Chad Fritz, Justin Gilbert, Matt Smith

## Fabricators by Company

## Madlyn Metal Fab Llc

2301 SE Hidden Way Ste 100  
Vancouver, WA 98661  
**Phone:** 360.693.1019  
**Email:** stacy@madlynfab.com  
**Website:** www.madlynfab.com  
**Year Established:** 2015  
**Description:** Woman owned metal fabrication business specializing in structural steel, stairs, handrail, balconies, seismic upgrades, ornamental steel and more.  
**Contact(s):** Dano Toristoja, Stacy Toristoja, Dustin Freund, Leah Latino

## Marks Metal Technology

10300 SE Jennifer St.  
Clackamas, OR 97015  
**Phone:** 503.656.0901  
**Email:** info@marksmetal.com  
**Website:** www.marksmetal.com  
**Year Established:** 1946  
**Description:** Marks Metal Technology is a metal and steel processor specializing in rolling, forming, waterjet cutting, machining and heavy fabrication services.  
**Contact(s):** David Marks, Rob Marks

## McClellan Iron Works

2102 Ross Ave.  
Everett, WA 98201  
**Phone:** 425.493.5525  
**Email:** rich@mcciron.com  
**Website:** www.mcciron.com  
**Year Established:** 1999  
**Description:** Detailing, fabrication and erection of structural steel, architectural steel, miscellaneous metals, ornamental metal work, feature stairs for sports facilities, commercial buildings and high-end residential construction. We are also WABO certified.  
**Contact(s):** Larry Cramer, Richard McClellan

## Mohawk Metal Co.

30011 Leghorn Ln.  
Eugene, OR 97402  
**Phone:** 971.313.1753  
**Email:** thebert@mohawkmetal.com  
**Website:** www.mohawkmetal.com  
**Year Established:** 1987  
**Description:** Located in Oregon and Washington Mohawk Metal can handle all of your fabrication, laser cutting, forming, and robotic welding needs.  
**Contact(s):** Ty Hebert, Brock Rowland, Mathew Mexicotte, Matt Miller

## Precision Iron Works, Inc.

102 Frontage Rd. S  
Pacific, WA 98047  
**Phone:** 253.887.5555  
**Email:** PIW@precisionironworks.com  
**Website:** www.precisionironworks.com  
**Year Established:** 1991  
**Description:** Precision Iron Works, Inc. is a structural miscellaneous steel fabricator with a very diverse product line background. We employ approximately 30 steel fabrication craftsmen and specialize in conventional-complex steel structures and wide flange shoring.  
**Contact(s):** Steve Leighton, Cade Marshall, Cade Marshall

## QB Fabrication & Welding

16225 SE 106th Ave  
Clackamas, OR 97015  
**Phone:** 503.788.1363  
**Email:** hanh@qbfabrication.com  
**Website:** www.qbfabrication.com  
**Year Established:** 1987  
**Description:** QB Fabrication is a state-of-the-art steel processing company. We manufacture a wide range of standard and custom made steel products.  
**Contact(s):** Eric Quach, Ben Quach

## Red Dog Fabrication, Llc

PO Box 330  
Vancouver, WA 98666  
**Phone:** 360.892.3647  
**Email:** patk@reddogfab.com  
**Website:** www.reddogfab.com/  
**Year Established:** 2014  
**Description:** Commercial Steel Fabrication and Erection.  
**Contact(s):** Mark Dunkle, Patrick Kiely

## Robertson Grating Products, Inc.

PO Box 4248  
Tualatin, OR  
**Phone:** 503.597.4190  
**Email:** jared@robertsongrating.com  
**Website:** www.rgpgrates.com  
**Year Established:** 1998  
**Description:** Supplier of all types of grating sold in stock sizes or fabricated to specifications: steel and aluminum bar grating, plank gratings, fiberglass grating, perforated sheets, wire mesh, weld-on and slip-on handrail fittings.  
**Contact(s):** Jared Robertson, John Robertson





Fabricators by Company

Solid Form

PO Box 119  
McMinnville, 97128  
**Phone:** 503-435-1400  
**Email:** deven@teamsolidform.com  
**Website:** teamsolidform.com  
**Year Established:** 2007  
**Description:** Structural, miscellaneous and ornamental metal

Standard Steel Fabricating Co.

PO Box 80907  
Seattle, WA 98108  
**Phone:** 206.767.3314  
**Email:** jim@standardsteelfab.com  
**Website:** www.standardsteelfab.com  
**Year Established:** 1936  
**Description:** Standard Steel Fabricating supplies custom fabricated structural and miscellaneous steel for commercial, industrial and marine applications throughout Western Washington, Alaska and Hawaii.  
**Contact(s):** Jim Duthie, Keith Anderson, Kevin Duthie

SunSteel Llc

312 SE Stonemill Dr. Suite 147  
Vancouver, WA 98684  
**Phone:** 360.329.7048  
**Email:** dstrain@sunsteellic.com  
**Website:** www.sunsteellic.com  
**Year Established:** 2013  
**Description:** AISC Steel Fabricator  
**Contact(s):** Carey Lee, Damion Strain, Jim Madden, Kim Robinson, Paul Willden, Roger O'Hara, Blake Hoskisson

The Lynch Company, Inc.

4706 SE 18th Ave.  
Portland, OR  
**Phone:** 503.781.4062  
**Email:** pat@thelynchco.com  
**Website:** www.thelynchco.com  
**Year Established:** 1919  
**Description:** General steel fabricators of ferrous and non-ferrous metals, from small prototype work to huge construction projects with a large AISC certified union shop and field installation crews. Experience makes the difference!  
**Contact(s):** Chris Haney, Pat Prentice, Robert Brown

Thompson Metal Fab, Inc.

3000 SE Hidden Way  
Vancouver, WA 98661  
**Phone:** 360.696.0811  
**Email:** mmoore@tmfab.com  
**Website:** www.tmfab.com  
**Year Established:** 1937  
**Description:** Our technically advanced facility features 10 huge bays, 336,000 square feet of indoor fabrication space, a 15-acre yard for assembly and fit-up, hydro cranes, 40-ton moving dollies, our own onsite coatings department, and access to the Pacific Ocean via  
**Contact(s):** Bruce Goetz, Jason Chun, Jim Nichols, John Rudi, Michael Moore

Transco Industries, Inc.

PO Box 20429  
Portland, OR 97294  
**Phone:** 503.256.1955  
**Email:** ap@transco-ind.com  
**Website:** www.transco-ind.com  
**Year Established:** 1961  
**Description:** Transco Industries has supplied fabricated steel, stainless steel & aluminum to an extremely diverse customer base over our 50+ years of business. In addition to fabricated metals, we have also manufactured many pieces of custom equipment/machinery, both customer & self designed. This experience, paired with our AISC certified facilities which include over 100,000 SQ-FT of manufacturing space, located on 10 Acres housing several pieces of automated processing equipment, as well as our own coating facilities makes Transco a great choice when looking to single source your project. Transco is also has an AWS D1-6 structural welding - stainless steel qualification.  
**Contact(s):** Jeff Brown, Mike Gibson

Tri-Lett Industries, Inc.

PO Box 580  
Oregon City, OR 97045  
**Phone:** 503.656.2434  
**Email:** jeffl@tri-lett.com  
**Website:** www.trilett.com  
**Year Established:** 1976  
**Description:** Custom metal fab, providing design assist and sourcing services to solve complex fabrication problems.  
**Contact(s):** Jeff Leonard, R. Scott Leonard

Vigor

9700 SE Lawnfield Rd.  
Milwaukie, OR 97015  
**Phone:** 503.653.6300  
**Email:** tyna.schloth@vigor.net  
**Website:** www.vigor.net  
**Year Established:** 1944  
**Description:** Vigor Works, LLC is a pioneering force in the fabrication and manufacturing industries. Founded in 1944, the company began achieving success fabricating in the demanding hydroelectric, bridge and civil construction industries. Vigor continues this tradi  
**Contact(s):** Brian Akin, Thane Giles, Jeff Kovar, Keith Chapman, Pat Leonard

Fabricators by Company



Thompson Metal Fab

**PTI**  
**POWDER TECH, INC.**

phone **503.612.6800**  
fax **503.612.6900**

**www.powdertech.net**

**9900 SW Herman Road**  
**PO Box 3221**  
**Tualatin, Oregon 97062**

**Large Part Capabilities • 52'L x 13'H x 14'W**



PTI & Powder Coating

- Specializing in **POWDER Coating Alternatives** to High Performance Liquid Paint Systems
- Accommodating **EXPEDITED Schedules** with **No Dry Time**
- Providing **COST-EFFECTIVE Solutions**
- Yielding Superior **DURABILITY** Less Damage from Handling & Installation
- Producing No Hazardous Air Pollutants or Waste **ENVIRONMENTALLY FRIENDLY**

Industry SPECS

- WASHINGTON D.O.T.
- OREGON D.O.T.
- AWWA C213/C550/C116
- NSF61
- FDA/USDA
- ASTM A950
- ASTM A972

**Excellent** for Architectural, Industrial, Marine and Commercial **USE**

**FEWER PROBLEMS.**

**MORE TMF SOLUTIONS.**

Before you select a fabricator to create the complex, multifaceted, “never-been-done” projects, you might ask yourself:

- Am I confident in the people I will be working with?
- Does the facility fit the need for my project?
- Is my schedule realistic given the capacity of the fabricator?
- Does the fabricator have a body of experience equal to my request?

If your answer is *no* to any of the above, consider TMF. We'll mitigate your fabrication risks by providing transparency and value-based solutions.

**THOMPSON**  
METAL FAB

**360-696-0811**  
**TMFAB.COM**

VETERAN OWNED SMALL BUSINESS  
BUILT WITH PRIDE IN VANCOUVER, WA | USA

API LICENSE (4F-0087), ISO (9001:2008), AISC (ADVANCED BRIDGES, F, P1), ASME (SECTION VIII, “U” STAMP)



# Fabricators by State

Use this listing of fabricators to find a company by state.  
You can look up full information on these companies on pages 11-14 or on our website at [www.pnsfa.org](http://www.pnsfa.org).

## Oregon

Albina Co., Inc.	QB Fabrication & Welding, Inc.
Fought & Company Inc.	Robertson Grating Products, Inc.
Grating Pacific, LLC	The Lynch Company, Inc.
Hogan Fab., Inc.	Transco Industries, Inc.
Ideal Steel, Inc.	Tri-Lett Industries, Inc.
KO Custom Fab, Inc.	Unobtanium, Inc.
L&M Industrial Fabrication	Vigor
Marks Metal Technology	
Mohawk Metal	

## Washington

Alpha Iron, LLC
BikeLid LLC/B3LC LLC
Brooklyn Iron Works
Greer Steel, Inc.
Jesse Co.
McClean Iron Works
Pederson Bros., Inc.
Precision Iron Works, Inc.
Standard Steel Fabricating Co.
Thompson Metal Fab, Inc.

For quality assurance process planning and evaluation,  
project management, and quality control inspections

## COUNT ON CERTIFIED EXPERTS FROM PQS

Whether you're an owner, contractor or fabricator, you know the success  
of your project requires expertise at every single stage - to ensure every  
piece, part, weldments and contract requirement is reviewed, monitored,  
tested and validated with careful attention to every detail.

Aerospace - Bridge/Infrastructure - Hydroelectric - Nuclear - Oil and Gas



Nate Lindell, CEO, Project + Quality Solutions  
More than 25 years in the Quality Industry  
503-550-9918  
[Nate.Lindell@projectqualitysolutions.com](mailto:Nate.Lindell@projectqualitysolutions.com)

- DBE Certified Firm
- Quality Control
- Quality Assurance
- Nondestructive Testing
- Project Management
- Quality Assurance Engineering
- Quality Assurance Program Development
- Quality Audits
- NACE Coating Inspection
- ASNT Level III Representation

# PNSFA Membership Benefits

Join PNSFA and connect with Fabricators and Steel Industry Partners throughout Oregon and Washington.

- Network with your peers and partners at the Annual Golf Tournament and Fall Conference.
- Corporate listings in the Resource Guide and Website link you with the partners and fabricators you need.
- Engage your team and bring valuable content and education opportunities into your business from the Fall Conference and the Spring Member Meeting's Economic Forecast.
- Consider serving on a committee or the PNSFA board and gain valuable leadership skills.
- Get involved with community projects and student activities promoting the steel business.



For More Information about PNSFA and Membership  
503.253.9030 | [info@pnsfa.org](mailto:info@pnsfa.org) | [www.pnsfa.org](http://www.pnsfa.org) | Connect on Linked In



Albina Co.

**HANNIBAL**  
Industries Inc.

Supplying the Pacific Northwest

## HANDRAIL MANUFACTURING SCH 40 PIPE

Hannibal Industries  
Los Angeles, CA  
323.588.4261  
[www.HannibalIndustries.com](http://www.HannibalIndustries.com)

Amanda Torrence  
Pacific Northwest Sales  
562.972.6949  
[atorrence@hannibalindustries.com](mailto:atorrence@hannibalindustries.com)



# Associate Members by Company

## Airgas USA. LLC

11900 NE 95th St., #400  
Vancouver, WA 98682  
**Phone:** 360.944.4000  
**Email:** bill.sanborn@airgas.com  
**Website:** www.airgas.com  
**Contact(s):** Darcy Peters, Greg Woods, Bill Sanborn

## Alliance/Seaport, A Varsteel Company

3000 SE Hidden Way, #40A  
Vancouver, WA 98661  
**Phone:** 360.693.0037  
**Email:** dougb@seaportsteel.com  
**Website:** www.alliance-steel.com  
**Contact(s):** Doug Banks, Joseph Vallejo

## American/Lampros Steel, Inc.

213 Bondgard Ave. E  
Enumclaw, WA 98022  
**Phone:** 503.651.6700  
**Email:** jtulley@lampros-steel.com  
**Website:** http://www.lamprossteel.com  
**Year Established:** 1983  
**Description:** Lampros Steel is a line service center with a focus on commercial construction and structural steel. Our on-site capabilities are burning, sawing and cambering.  
**Contact(s):** Joe Tulley

## Arcelormittal

1250 NW Kearney St. #508  
Portland, OR 97209  
**Phone:** 312.639.8329  
**Email:** justin.lowery@Arcelormittal.com  
**Contact(s):** Justin Lowery

## Astralloy A NUCOR Company

860 N. Aspen Ct.  
Canby, OR 97013  
**Phone:** 503.250.1289  
**Email:** david.evertz@astralloy.com  
**Contact(s):** David Evertz

## Atlas Tube, Inc.

3247 Golden Gate Canyon Rd.  
Black Hawk, CO 80422  
**Phone:** 303.478.2679  
**Email:** don.tamm@atlastube.com  
**Website:** www.atlastube.com  
**Year Established:** 1984  
**Description:** The largest HSS producer in North America.  
**Contact(s):** Don Tamm

## Aveva, Inc.

920 Memorial City Way, Ste. 1200  
Houston, TX 77024  
**Phone:** 541.485.4719  
**Email:** sue.landis@aveva.com  
**Website:** http://www.aveva.com/futureofsteelfabrication  
**Year Established:** 1967  
**Description:** Aveva, Inc. (formerly known as FabTrol Systems) is the global-leading provider of steel fabrication management software.  
**Contact(s):** Randy Bolt, Sue Landis

## Bank Of America

1211 SW 5th Avenue, 25th floor  
Portland, OH 97204  
**Phone:** 503.944.3209  
**Email:** rschaefer@baml.com  
**Year Established:** 1998  
**Description:** International financial institution offering commercial, international, personal products and services, including foreign exchange, trade documents, investing, and many more  
**Contact(s):** Robert Schaefer

## Brown-strauss Steel

150 Panel Way  
Longview, WA 98632  
**Phone:** 360.501.5300  
**Email:** shenning@brownstrauss.com  
**Website:** www.brownstrauss.com  
**Year Established:** 1905  
**Description:** Brown-Strauss is one of the largest distributors of wide flange beams and structural tubing in the United States, serving customers from eight locations and maintaining an inventory between 60,000 - 80,000 tons of steel.  
**Contact(s):** Dan Morgan, Dave Schilling, Paul Whiton

## Evraz Inc., Na

14400 N Rivergate Blvd.  
Portland, OR 97203  
**Phone:** 503.978.6107  
**Email:** benjamin.erdmann@evrazna.com  
**Website:** www.evrazna.com  
**Year Established:** 1926  
**Description:** Carbon, HSLA & alloy plate, and coil manufacturer. Specializing in heat treated products.  
**Contact(s):** Joe Loomis, Lance Richards, Benji Erdmann

## Farwest Steel

3703 NW Gateway Ave.  
Vancouver, WA 98660  
**Phone:** 360.567.1431  
**Email:** dave.terry@farweststeel.com  
**Website:** www.farweststeel.com  
**Year Established:** 1956  
**Description:** Farwest Steel is a distributor and processor of carbon steel products from our locations in Stockton, Medford, Boise, Moses Lake, Renton, Eugene, Wasilla, AK and our flagship facility in Vancouver, WA. Our mission is to deliver quality metal solutions that drive customer success.  
**Contact(s):** Brett Rankin, Chris Holzgang, Dave Terry, Macih Edwards, Ron Harrison

## Galvanizers Company

2406 NW 30th Ave.  
Portland, OR 97210  
**Phone:** 503.227.5611  
**Email:** VSmith@galvco.com  
**Year Established:** 1941  
**Description:** For over 76 years Galvanizers Company has been providing hot dip galvanizing for corrosion protection with emphasis on product quality and customer service.  
**Contact(s):** Craig Hamilton, Gene Bickel, Hester Nau

## Hannibal Industries

3851 S Santa Fe Ave.  
Los Angeles, CA 90058  
**Phone:** 323.588.4261  
**Email:** atorrence@hannibalindustries.com  
**Website:** www.hannibalindustries.com/  
**Year Established:** 1985  
**Description:** Manufacturer of carbon steel tubing  
**Contact(s):** Matthew DeVries, Amanda Torrence

## InfoSight Corporation

PO Box 5000  
Chillicothe, OH 45601  
**Phone:** 740.642.3600  
**Email:** bdolan@infosight.com  
**Website:** www.infosight.com  
**Year Established:** 1993  
**Description:** InfoSight specializes in solutions for product identification and tracking through harsh processes associated with galvanizing, shot-blasting, and painting.  
**Contact(s):** Becky Dolan

## Interstate Gratings

1820 W. 200 S.  
Lindon, UT 84042  
**Phone:** 801.922.4700  
**Email:** scottc@interstategratings.com  
**Website:** interstategratings.com  
**Year Established:** 2007  
**Description:** Interstate Gratings operates in a 120,000 SF fully-integrated manufacturing and fabricating facility, ideally located in the hub of the west. We have a highly experienced in-house detailing and project management team. Our custom automated CAD solutions provide seamless integration with our shop processes and our advanced CRM solution accurately tracks jobs from start to finish. With an expert team of grating professionals, state-of-the-art equipment and integrated technology, Interstate Gratings is prepared to take on jobs of any scope or schedule.  
**Contact(s):** Scott Clark

## Jeff Hayes Coaching & Consulting

9030 N. Hess St., PMB351  
Hayden, ID 83835  
**Phone:** 509.939.4223  
**Email:** jeffryhayes@msn.com  
**Year Established:** 2008  
**Description:** JHC&C offers consulting for: jobsite dispute resolution, temp management, industrial coatings, owner dispute resolution, owner management coaching, and more to the structural steel industry.  
**Contact(s):** Jeff Hayes

## Jordan River Galvanizing, Inc.

5447 W. Axel Park Rd.  
West Jordan, UT 84081  
**Phone:** 801.282.9375  
**Email:** glangevin@jrgalv.com  
**Website:** www.jrgalv.com  
**Year Established:** 2000  
**Description:** Jordan River Galvanizing has a kettle that is 30' long 7' deep and 5' wide. Galvanizing the smallest parts to over 50' pieces as well.  
**Contact(s):** Glen Langevin

## Maruichi Oregon Steel Tube

8735 N Harborgate St.  
Portland, OR 97203  
**Phone:** 503.737.1204  
**Email:** merlock@most.us.com  
**Website:** www.most.us.com  
**Year Established:** 2015  
**Description:** M.O.S.T. is located in Portland producing HSS sizes ranging from 2 1/2" sq thru 10" sq along with 1/2" sq thru 2" sq including rounds, pipe and the associated rectangles. Grades include A500, A1085, A847, CSA G40.21, A513, A500A/B  
**Contact(s):** Ty Merlock

## Materials Testing & Inspection

15115 SW. Sequoia Pkwy. Suite 130  
Portland, OR 97224  
**Phone:** 503.747.7159  
**Email:** Coronelj@mti-id.com  
**Description:** Materials Testing & Inspection

## New Millennium Building Systems

8200 Woolery Way  
Fallon, NV 89406  
**Phone:** 775.867.2130  
**Email:** kelly.robins@newmill.com  
**Website:** www.newmill.com  
**Contact(s):** Kelly Robins, Bob Stearns

## Northwest Steel & Pipe

PO Box 11247  
Tacoma, WA 98411  
**Phone:** 253.304.8014  
**Email:** steve@nwsteel.net  
**Website:** www.nwsteel.net  
**Year Established:** 1950  
**Description:** Northwest Steel & Pipe now operates from a new, state of the art facility with 160,000 square feet of warehouse space on a 15 acre site which is full of structural steel products. We also have a strong history of customer service.  
**Contact(s):** Steven Seislove

## Nucor Beam Group

**Nucor Yamato Steel Company**  
5929 E State Hwy 18 • Blytheville, AR 72315  
**Nucor Steel Berkeley**  
1455 Old Hagan Ave • Huger, SC 29450  
**Phone:** 843.870.0311  
**Email:** christopher.evans@nucor.com  
**Website:** www.nucorbeam.com  
**Year Established:** 1987  
**Description:** Nucor-Yamato Steel Company was formed in 1987 as a joint venture between Nucor and Yamato Kogyo with the goal of operating a steel mini-mill to manufacture wide-flange beams in Blytheville, Arkansas. Today, Nucor-Yamato Steel Company has the capacity to produce over 2.5 million tons per year of not only wide-flange beams, but also H-piling, sheet piling, standard I-beams, channels and various other structural shapes.  
**Contact(s):** Chris Evans

## Nucor Fastener

6979 Turpin View Drive  
Cincinnati, OH 45244  
**Phone:** 513.833.4710  
**Email:** michael.veech@nucor.com  
**Website:** www.nucor-fastener.com  
**Year Established:** 1986  
**Description:** Nucor Fastener is the largest structural bolt, nut & TC manufacturer in North America. We manufacture A325/ A490 Hex, heavy hex nuts & TC's with steel from our Nucor steel divisions, based in Norfolk, NE and Darlington, SC.

## Oregon Feralloy Partners

14400 N. Rivergate Rd., Bldg 56  
Portland, OR 97203  
**Phone:** 503.286.8869  
**Email:** mfiore@feralloy.com  
**Website:** www.feralloy.com/services/oregon-feralloy-partners/  
**Year Established:** 2001  
**Description:** In-line temper mill with cut-to-length line capable of processing coils up to 99" wide and up to 0.75" thick. Stacker can accommodate plates to 80' in length. Inside master coil storage available. Call for details.  
**Contact(s):** Michael Fiore

## Oregon Sandblasting & Coating, Inc.

PO Box 1171  
Tualatin, OR 97062  
**Phone:** 503.692.3575  
**Email:** jason@oregonsandblast.com  
**Year Established:** 1980  
**Contact(s):** Jason Crawford



## Associate Members by Company

### PDM Steel Service Centers, Inc.

1785 Schurman Way  
Woodland, WA 98674  
**Phone:** 360.225.1133  
**Email:** tbindeman@pdmsteel.com  
**Website:** www.pdmsteel.com  
**Year Established:** 1954

**Description:** Full line carbon steel supplier.  
**Contact(s):** Casey Haldeman, Daniel Chavis, Doug Skinner, Jonathan Vetsch, Leslie Koontz, Matt Dee, Tyson Lindeman

### Portland Bolt & Manufacturing Co.

3441 NW Guam St.  
Portland, OR 97210  
**Phone:** 503.227.5488  
**Email:** jtodd@portlandbolt.com  
**Website:** www.portlandbolt.com  
**Year Established:** 1912  
**Description:** Portland Bolt is a manufacturer of nonstandard anchor bolts and construction fasteners from 1/2" diameter through 6" diameter. Also offering in house galvanizing.  
**Contact(s):** Dane McKinnon, Gary Rusnyk, Jonathan Todd, Michael Gordian

### Portland Fasteners

3103 NW St. Helens Rd.  
Portland, OR 97210  
**Phone:** 503.227.0101  
**Email:** bakertj@portlandfasteners.com  
**Website:** www.portlandfasteners.com  
**Year Established:** 1991  
**Contact(s):** Patrick Baker

### Powder Tech, Inc.

PO Box 3221  
Tualatin, OR 97062  
**Phone:** 503.612.6800  
**Email:** josh@powdertech.net  
**Website:** www.powdertech.net  
**Year Established:** 1997  
**Description:** Powder coating and sandblasting.  
**Contact(s):** Joe Lang, Josh Payne

### Product Manufacturing, Inc.

PO Box 1245  
Canby, OR 97013  
**Phone:** 503.266.6196  
**Email:** paul@productmfg.com  
**Website:** www.productmfg.com  
**Year Established:** 1970  
**Description:** Product Mfg is a Job Shop machine shop with 25 CNC machining centers. From turning wheels, axles, pins and sheaves to milling key ways, taper shims, drilling and tapping mounting plates we process your drawings to the specifications set by your project re  
**Contact(s):** Paul Wolff

### Project + Quality Solutions

11616 NE Halsey St.  
Portland, OR 97220  
**Phone:** 503.550.9918  
**Email:** nate.lindell@projectqualitysolutions.com  
**Website:** www.projectqualitysolutions.com  
**Year Established:** 2018  
**Description:** Project & Quality Solutions (PQS) is a leading firm specializing in Project Management, Engineering and Quality Services to the structural steel industry.  
**Contact(s):** Nate Lindell

### PythonX Lincoln Electric Company

935 Stanton Ave  
San Pablo, CA 94806  
**Phone:** 775.229.3416  
**Email:** ty\_erquiaga@lincolnelectric.com  
**Year Established:** 2013  
**Description:** PythonX – A Lincoln Electric Company is a leader in the design and manufacture of 3D robotic plasma cutting systems. Based in Hamilton, Ontario, Canada, the company serves a wide base of customers in the structural steel, construction, oil and gas and general fabrication industries.  
**Contact(s):** Matthew Miller

### Ram Steelco, Inc.

2249 Madrona Ave. SE  
Salem, OR 97302  
**Phone:** 503.588.1311  
**Email:** marky@ramsteelco.net  
**Website:** www.ramsteelco.net  
**Year Established:** 1950  
**Description:** We are a metals service center. We supply steel, aluminum, stainless materials. Pre-processing services include: burning, forming, rolling, sawing, and plate processing.  
**Contact(s):** Mark Young

### Richards Pipe & Steel, Inc.

144 Roy Rd. SW  
Pacific, WA 98047  
**Phone:** 253.939.9660  
**Email:** mike@richardspipe.com  
**Website:** www.richardspipe.com  
**Year Established:** 1989  
**Description:** Steel pipe and piling distributor.  
**Contact(s):** Mike Richards

### SDS/2

1501 Old Cheney Rd.  
Lincoln, NE 68512  
**Phone:** 402.440.4238  
**Email:** david@sds2.com  
**Website:** www.sds2.com  
**Year Established:** 1981  
**Description:** Design Data's SDS/2 software solutions provide automatic detailing, connection design, engineering information, and other data for the steel industry's fabrication, detailing and engineering sectors.  
**Contact(s):** David Zabka

### Seaport Steel, Inc.

3660 E Marginal Way S  
Seattle, WA 98134  
**Phone:** 206.343.0700  
**Email:** matth@seaportsteel.com  
**Website:** www.seaportsteel.com  
**Year Established:** 1983  
**Description:**  
**Contact(s):** Joe Lynch, Kelly Totten, Matt Hernandez, Todd Raymond

### Seattle Galvanizing Company, Inc.

19603 60th Ave NE  
Arlington, WA 98223  
**Phone:** 206.783.3100  
**Email:** sales@seattlegalvanizing.com  
**Website:** www.seattlegalvanizing.com  
**Year Established:** 1962  
**Description:** Seattle Galvanizing Company, Inc has been providing an exceptional hot-dip galvanizing service for corrosion protection of steel and iron for nearly 60 years. We have the capacity to process over 50,000 tons every year. Not only do we have the largest galvanizing kettle in the Pacific Northwest, but we also have the material handling equipment, the lifting capabilities, the stabilized storage space, and the transportation services to make us your best full-service galvanizing option!  
**Contact(s):** Jake Bertrand, Jared Stortini, Hadi Mirzai, Nazani Mirzai

### Simpson Strong-tie Co., Inc.

5956 W. Las Positas Blvd.  
Pleasanton, CA 94588  
**Phone:** 800.559.9099  
**Email:** tellis@strongtie.com  
**Website:** www.tellis@strongtie.com  
**Year Established:** 1956  
**Contact(s):** David Gilroy, Gary Owen, Lance Roth, Tim Ellis

### Spokane Galvanizing, Inc.

PO Box 879  
Airway Heights, WA 99001  
**Phone:** 509.244.4073  
**Email:** dlang@spokanegalvanizing.com  
**Website:** www.spokanegalvanizing.com  
**Year Established:** 1984  
**Description:** Spokane Galvanizing, Inc. has over 30 years of experience, uses special high grade zinc, and all galvanizing is done in full compliance with ASTM-A123 standards.  
**Contact(s):** David Lang

### St. Louis Screw & Bolt

2000 Access Blvd.  
Madison, IL 62060  
**Phone:** 800.237.7059  
**Email:** slhoward@stlouisscrewbolt.com  
**Website:** www.stlouisscrewbolt.com  
**Year Established:** 1887  
**Description:** St. Louis Screw & Bolt is one of the longest operating bolt manufacturers in the United States and, in fact, the world. SLSB specializes in HEX HEAD BOLTS in A325 & A490 type I, III Hot Dip Galvanized, Mechanically Galvanized, Weathering and Plain Finish.  
**Contact(s):** Joe Howard

### Steel Dynamics Structural Mill

2601 S Country Rd., 700 E  
Columbia City, IN 46725  
**Phone:** 843.621.0818  
**Email:** Bob.barrick@steeldynamics.com  
**Website:** www.stld-cci.com  
**Year Established:** 2002  
**Description:** We manufacture wide flange beams, channel and structural angle with an annual melt capacity of 2.5 Million tons  
**Contact(s):** Bob Barrick



Madlyn Metal



**360-329-7048 | www.sunsteelllc.com**

312 SE Stonemill Dr. Ste 147, Vancouver, WA 98684

## Associate Members by Company



## TFE Connection

650 NE Holladay St. #1600

Portland, OR 97232

**Phone:** 503.841.2643

**Email:** steven@tfeconnection.com

**Website:** www.tfeconnection.com

**Year Established:** 2018

**Description:** TFE Connection uses our direct mill representative relationships to be able to supply North American fabricators with custom Built Up members, highly processed plate, and other plate byproducts. We are production is capable for AWS D1.1, D1.5, D1.8 DC, and also CWB 47.1 with both ASTM and CSA grades available. With our mill relationships we can offer fabricators, a single supply stream for greater distribution speeds, sections sold at net weight, as well as full DDP quotes to your shop or site with 60 days from arrival trade financing. No matter the project size or complexity scope our dedicated engineers and estimating staff are here to support on you Built Up sections and processed plate needs.

**Contact(s):** Steven Ogilvie

## Totten Tubes

3001 SE Columbi Way

Building 41, Bay 6

Vancouver, WA 98661

**Phone:** 360.828.5210

**Email:** greg@tottentubes.com

**Website:** www.tottentubes.com

**Year Established:** 1955

**Description:** Tubing and pipe distributor stocking both odd and common sizes, and capable of sourcing the steel industry's most difficult inquiries. Daily delivery to the Pacific Northwest market from Vancouver, WA facility.

**Contact(s):** Greg Totten, Mike Betance, Mike Stacey, Paul Totten

## Valmont Coatings/ Pacific States Galvanizing Facility

9700 SW Herman Rd.

Tualatin, OR 97062

**Phone:** 503.692.8888

**Email:** PacificStatesInfo@Valmont.com

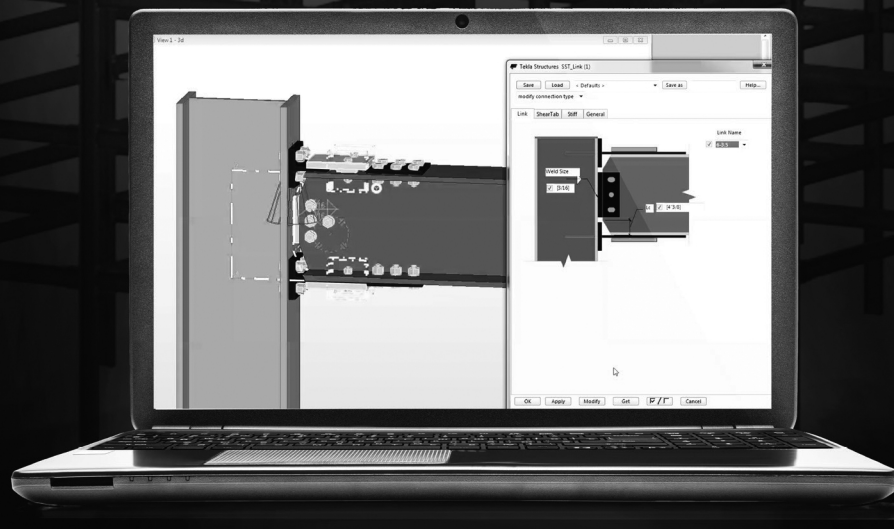
**Website:** www.valmontcoatings.com

**Year Established:** 1981

**Description:** Job shop, hot dip galvanizing.

**Contact(s):** Chris Compton, Jerome Lefor, Keith Gainer, Maurice Satterwhite

# Streamline structural steel fabrication.



## Yield-Link® technology tools from Simpson Strong-Tie — a smarter way to tackle complex connections.



Our Yield-Link software plugins and design support services provide the functionality and technical expertise to help you quickly detail, fabricate and erect complete designs matched to your project's unique specifications — all while keeping you on time and within budget.

Download the right tools for your structural steel project by visiting [go.strongtie.com/ylpluginfab](http://go.strongtie.com/ylpluginfab) or call us at (800) 999-5099 to learn more.



Available plugins: Tekla®

©2019 Simpson Strong-Tie Company Inc. SSTM-PNSFAAD19



# AISC Certification

## How can it benefit my construction project?

AISC's certification programs set the quality standard for the structural steel industry and are the most recognized national quality certification program for the industry. AISC's programs focus on the entire process of fabrication and erection and the goal is to build quality structures from the start by focusing on error prevention rather than error correction.

Certified companies have been through a rigorous initial evaluation and are subject to annual audits. These evaluations require a comprehensive administrative review, a documentation audit, and an on-site audit of the firm's quality management system. This is significantly different than "product inspection," since inspection does not focus on the root cause of the error and preventing it from happening again. An initial certification may take up to six months to complete but the annual cost is relatively moderate at less than \$5,000 for an AISC member fabricator with fewer than 99 employees.

During the on-site audit, a company's day-to-day operations are compared with the documented procedures from its quality management system. These systems are measured against AISC's list of core quality criteria for both fabricators and erectors. Ultimately, the program requires the company to be accountable for all facets of its organization, from management responsibility to employee training to material purchasing and handling to project specific erection plans.

A key feature of the program is creating a continuous growth model that requires requires goal setting. Even the best and brightest firm – regardless of size – can benefit from having its quality procedures reviewed and audited on a regular basis.

So, how does **AISC Quality Management Systems Certification** add value to projects and reduce risk?

## Quality Assurance

Have you run into issues on projects that didn't require AISC Certification—or on projects that specified AISC Certification but the requirements were waived? Nobody likes to find mistakes, especially ones that cost the project time or money. AISC's program is designed to certify that companies have proper procedures in place and are following them. Through the auditing process, the program verifies a company's QMS is meeting the certification requirements.

## Evaluate and Prequalify Project Bidders

Sometimes you just don't have a relationship with fabricators or erectors near your project. Or, maybe the project team needs a short list of bidders. Selecting AISC-Certified companies can identify a steel team that has an active,

dedicated quality management system in place and adhered to. The easiest way to find an AISC-Certified fabricator or erector is to visit [www.aisc.org/certsearch](http://www.aisc.org/certsearch).

## AISC Program Standards Have Universal Recognition

Section 1704 of the International Building Code (IBC) and Chapter N of the AISC Specification for Structural Steel Buildings allow for the waiving of special inspection requirement for structural steel fabricators and erectors approved by the authority having jurisdiction (AHJ). Most AHJs approve AISC-certified fabricators and erectors, saving the project money and time because those inspections are performed by the fabricator or erector with their own in-house staff.

For additional information, please visit [www.aisc.org/certification](http://www.aisc.org/certification) or contact AISC at 312.670.7520 or [certification@aisc.org](mailto:certification@aisc.org). Source: American Institute of Steel Construction



# 503-227-5611

**Toll Free: 1-800-378-5611**

2406 NW 30th Avenue  
Portland, OR 97210

E-Mail: [chamilton@galvco.com](mailto:chamilton@galvco.com)

Fax: 503-227-2558

## Kettle Size

**43' L x 66" W x 76" D**

*Member of the American Galvanizers Association*



**ZINKPOWER**  
PORTLAND

K O P F   G R O U P



# Advertiser Index

Special thanks to the following advertisers who have contributed generously to this Resource Guide.  
To find out more about these supporting companies, see their ads on the pages below.

Brooklyn Iron Works .....	13
Galvanizers Company .....	23
Grating Pacific .....	5
Hannibal.....	17
Hogan Fab, Inc. ....	10
InfoSight .....	8
Jesse Co. ....	9
The Lynch Company.....	3
Powder Tech, Inc.....	15
Project + Quality Solutions .....	16
Robertson Grating Products .....	4
Simpson Strong-Tie .....	22
Standard Steel Fabricating Co. ....	Outside Back Cover
SunSteel .....	20
Thompson Metal Fab.....	14
Seattle Galvanizing.....	Inside Front Cover
Valmont Coatings.....	11

# Photo Index

Association photos identified below from top to bottom, left to right.

Albina, Co.....	17
KO Custom Fab .....	1
The Lynch Company.....	1
Mohawk Metal .....	1
Madlyn Metal .....	21
Transco .....	2, 10
KO Custom Fab .....	Cover

## Fabricator Certifications and Association Memberships

### Fabricator Certifications and Association Memberships\*

Fabricator Certifications and Association Memberships*	Certifications or qualifications the following companies hold:																				Association Memberships							
	AISC Certifications										AWS Qualifications					ASME Certifications												
	BU = Certified Building Fabricator (previously noted as acronym "STD")	SBR = Certified Bridge Fabricator - Simple	IBR = Certified Bridge Fabricator - Intermediate (Major)	ABR = Certified Bridge Fabricator - Advanced (Major)	CBR = Major Steel Bridges	CPT = Certified Component Manufacturer - Bridge	CSE = Certified Steel Erector	ACSE = Advanced Certified Steel Erector	FCE = Fracture Critical Endorsement	SPE-P1 = Sophisticated Paint Endorsement - Enclosed	SPE-P2 = Sophisticated Paint Endorsement - Covered	SPE-P3 = Sophisticated Paint Endorsement - Exposed	D1.1 Structural Welding - Steel	D1.2 Structural Welding - Aluminum	D1.5 Bridge Welding	D1.6 Structural Welding - Stainless Steel	D1.8 Seismic Welding	Section VIII-I	Section VIII-II	Section III	NQA-I	ASME or CISC	AGC National	AGC Local Chapter	ASME	AWS	CWB	NOMMA
Advanced Welding And Steel	•											•										•				•		
Albina Co., Inc.													•									•						
Brooklyn Iron Works	•		•		•				•	•			•		•							•				•	•	
Grating Pacific, LLC													•															
Greenberry Industrial LLC	•			•	•				•				•	•	•				•		•	•	•	•	•	•		
Hogan Fab., Inc.		•											•									•		•		•		
Jesse Co.	•			•	•				•				•	•	•							•	•	•		•		
KO Custom Fab, Inc.													•															
L&M Industrial Fabrication	•	•	•						•	•			•		•							•				•		
Madlyn Metal Fab Llc	•					•							•									•				•		
Marks Metal Technology													•													•		
McClean Iron Works	•	•				•	•	•		•			•	•	•		•					•			•	•		
Mohawk Metal		•											•	•	•							•				•		
Precision Iron Works, Inc.	•												•									•		•		•		
QB Fabrication & Welding, Inc.													•	•												•		
Red Dog Fabrication, Llc													•		•							•						
Solid Form																							•	•				•
Standard Steel Fabricating Co.	•																					•	•	•		•		
SunSteele	•												•									•						
The Lynch Company, Inc.	•						•						•	•								•	•	•		•		
Thompson Metal Fab, Inc.	•			•	•	•			•	•			•	•	•				•	•	•	•	•		•	•		
Transco Industries, Inc.	•		•		•				•	•			•	•	•	•						•				•		
Tri-Lett Industries, Inc.													•	•														
Vigor	•			•	•				•	•			•	•	•				•	•	•	•	•		•	•	•	

\*Please consult with the organization responsible for administering all certifications, endorsements or qualifications for current information.



# Areas of Specialty Fabricator Members

# Areas of Specialty

# Fabricator Members

	Structural Steel				Bridges				Steel Plate Work					Fabricated Products					Marine Work			Processing/Job Shop						Design/Build					Field Erection					
	Complex Steel Buildings	Conventional Steel Buildings	Metal Buildings	Miscellaneous	Major Steel Bridges	Pedestrian Overcrossings	Simple Steel Bridges		Heat Exchangers	Plate Components	Plate Weldments	Pressure Vessels	Tanks & Containers	Architectural Elements	Grating Systems	Platforms & Ramps	Sign Structures	Stairways & Handrails	Towers & Trusses	Boat / Ship Construction	Dock Work	Repair	CNC Burning	Machine Shop	Metal/Steel Fabrications	Paint/Coatings	Rolling & Bending	Sawing	Shearing & Forming	Bridges	Buildings	Commercial	Industrial	Machinery/Cranes	Bridge Construction	Building Construction	Industrial	
Advanced Welding and Steel	•	•		•										•	•	•	•	•	•				•		•	•		•	•									
Albina Co., Inc.				•						•				•		•	•	•	•				•		•		•											
Brooklyn Iron Works	•	•	•	•	•	•	•				•		•	•		•	•	•	•				•		•	•	•	•	•		•	•	•	•				
Carbon Steel, Inc.	•	•	•	•											•	•		•	•				•		•	•					•	•	•		•	•		
Grating Pacific, LLC															•	•		•																				
Greenberry Industrial, LLC	•	•	•	•	•	•	•		•	•	•	•	•	•	•	•		•	•				•		•		•	•	•	•		•			•			
Hogan Fab., Inc.				•		•	•			•	•			•	•	•	•	•	•		•				•	•				•								
Ideal Steel, Inc.																						•			•		•	•										
Jesse Co.	•			•	•	•	•			•	•		•			•	•	•	•	•	•	•		•	•	•	•	•	•	•	•	•	•			•		
KO Custom Fab, Inc.		•		•										•		•		•						•														
L&M Industrial Fabrication	•	•		•	•	•	•			•	•		•	•		•	•	•	•						•					•	•	•						
Madlyn Metal Fab Llc	•	•	•	•													•	•						•										•	•			
Marks Metal Technology				•		•	•			•	•		•	•		•	•	•	•		•		•	•	•		•	•	•									
McClean Iron Works	•	•	•	•	•		•			•	•			•	•	•	•	•	•	•	•	•	•	•	•	•	•	•	•	•	•	•	•	•	•	•	•	
Mohawk Metal Co.				•			•		•	•	•		•	•		•	•	•	•						•	•	•	•	•			•				•		
Precision Iron Works, Inc.	•	•		•			•							•	•	•	•	•	•		•				•	•		•		•	•							
QB Fabrication & Welding, Inc.	•	•	•	•			•			•	•		•	•	•	•	•	•	•	•	•	•	•	•				•	•									
Red Dog Fabrication, Llc		•		•										•		•		•	•				•				•							•				
Robertson Grating Products, Inc.				•											•	•																						
Standard Steel Fabricating Co.	•	•		•						•	•			•	•	•	•	•	•		•				•													
SunSteele Llc	•	•		•										•	•	•		•	•				•		•	•		•	•		•	•			•			
The Lynch Company, Inc.	•	•	•	•						•	•		•	•	•	•	•	•	•	•	•	•	•	•	•	•	•	•	•						•	•		
Thompson Metal Fab, Inc.	•	•			•	•	•			•	•	•	•						•	•	•		•	•	•	•	•	•	•	•		•						
Transco Industries, Inc.		•	•	•	•	•	•			•	•			•	•	•	•	•	•			•	•	•	•	•	•	•	•				•	•				
Tri-Lett Industries, Inc.				•						•	•		•	•	•	•		•	•	•	•	•	•	•	•	•	•	•	•		•	•	•	•				
Vigor	•	•	•	•	•	•	•		•	•	•	•	•	•	•	•	•		•	•	•		•	•	•	•	•	•	•	•	•	•	•	•				



■ — Areas of Specialty – Associate Members — ■

## Areas of Specialty Associate Members

[illegible]

■———— Areas of Specialty – Associate Members ————■





# Standard Steel Fabricating Co

**Call Us Today**  
**206-767-3314**

## Steel Fabricating Contractors in Washington, Alaska, & Hawaii



## Experience You Can Count On!

When you trust in Standard Steel Fabricating you get a company that offers the best product at a reasonable price. With over 80 years in business, we have the experience and expertise to take on jobs of all sizes. Our clients choose us because we offer unmatched expertise and service.

### **Our services and expertise cover a wide range of applications including:**

- Structural Steel Components
- Architectural Steel Elements
- Stairway Systems And Railings
- Utility Substation Structures
- Box Girders
- Marine Structures such as Dolphins & Gangways
- And Much More

### **We've earned our client's trust by:**

- Maintaining Quality Control On All Products
- Offering On Time Delivery
- Meeting Safety Requirements, Codes, & Practices
- Offering Fast And Efficient Production

With an experienced team on our side, we are able to produce up to 300-tons of structural fabricated products per month. Our products can range up to a maximum length of 120-ft. and have an overall lifting capacity at 20-tons. With such diversity, we have the ability to take on all types of projects of different sizes ranging from construction clientele to industrial, institutional, commercial and marine and more.

We have membership in the following professional associations



**8155 First Avenue South • Seattle, WA 98108**  
**206.767.3314 • Visit our Web Site at [www.standardsteelfab.com](http://www.standardsteelfab.com)**